

Scarsdale Public Safety Facility

Scarsdale, New York

Construction Manager & Cost Estimator

Calgi Construction Management

Architect

Peter F. Gaito & Associates



Photos Courtesy of Peter F. Gaito, Jr. AIA, NCARB

The Village of Scarsdale's Police and Fire Departments recently moved into their newly renovated and expanded Public Safety Facility. The new Headquarters, situated on 0.99 acres in the Village, incorporated 17,250 square feet of renovations to the existing facility, built in 1924, and a 9,000-square-foot addition. This new addition effectively and seamlessly ties into the existing 1924 facility paying tribute to Scarsdale's police and firefighting history as it gracefully stands apart from its neighbors as a proud symbol of confidence, fortitude and safety.

The design of the Facility, by Peter F. Gaito Architects, Engineers and Planners cleverly satisfies all of the present and future expansion needs of both Departments. Special attention was paid to the flow of public and private traffic as well as noise level concerns and multi-use flexible spaces. Also, the design fulfills all of the program requirements including a commercial kitchen, male and female bath, shower and locker facilities, various offices for the Chiefs, Inspectors, Tour Commanders, Detectives and other Officers. The Facility also includes a new Dispatch Center, Multi-Purpose rooms, an Audio-Visual training room, Exercise room, comfortable living quarters, various equipment and clerical storage areas, an underground



3-lane Firing Range, miscellaneous support spaces as well as a mini-museum to include a "wall of history."

Additionally, the Public Safety Headquarters project, which was managed, coordinated and supervised by Calgi Construction Management, includes a series of improved exterior and interior design features. The energy-efficient building includes an established street presence to signify the building as the Scarsdale Public Safety Facility, a tower to

Product Information

Brick: Redland, Glen Gery

Acoustical: Armstrong

Gypsum: USG *Slate Roofing:*

Vermont Structural Slate Co., Inc.

Carpet: Mohawk *VCT:* Armstrong

Windows: Peerless

Entrances & Storefronts: YKK-America

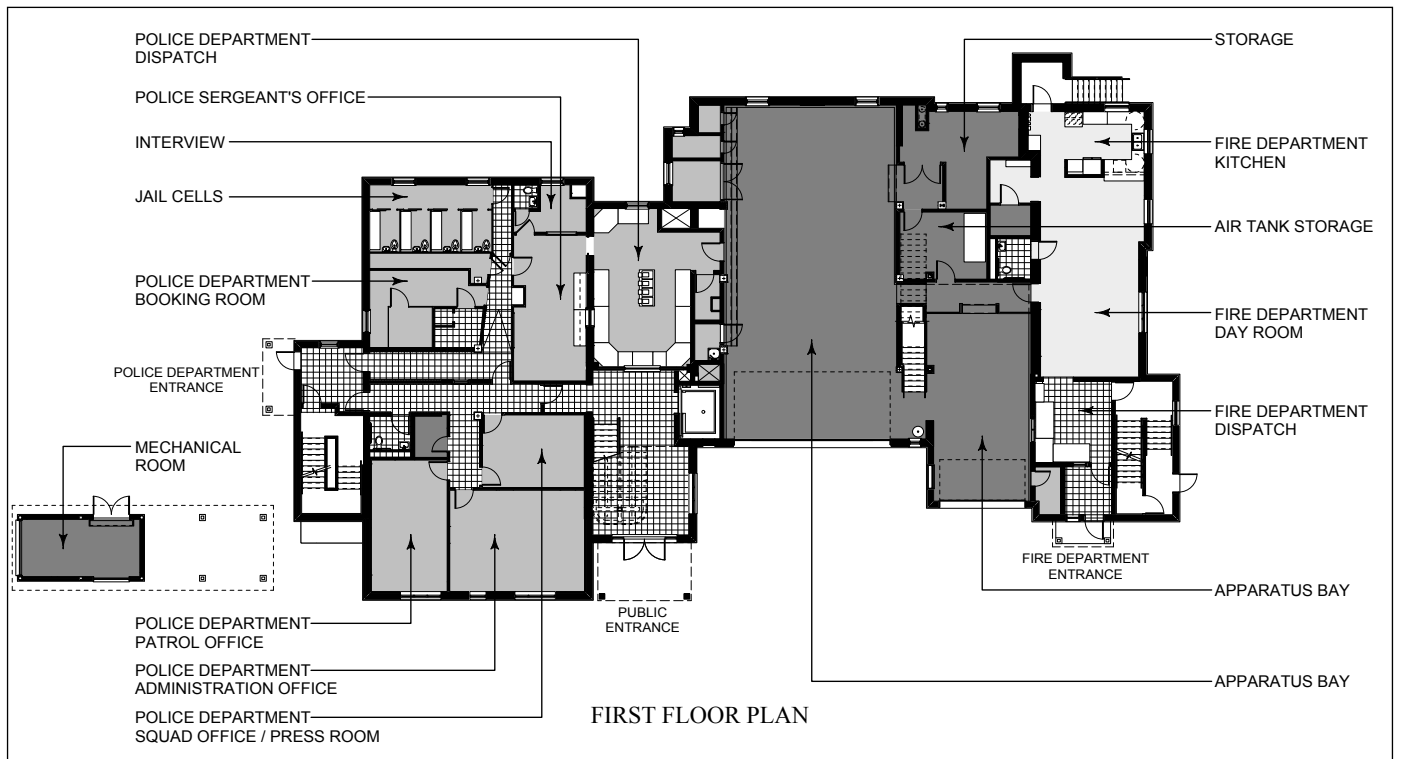
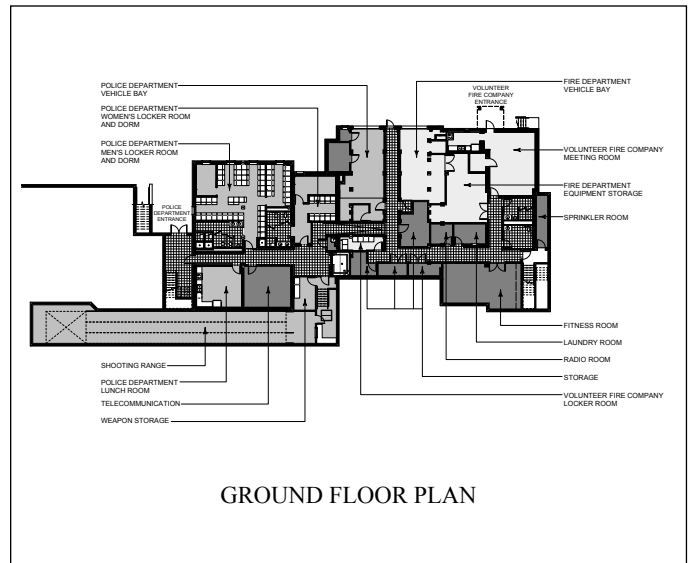
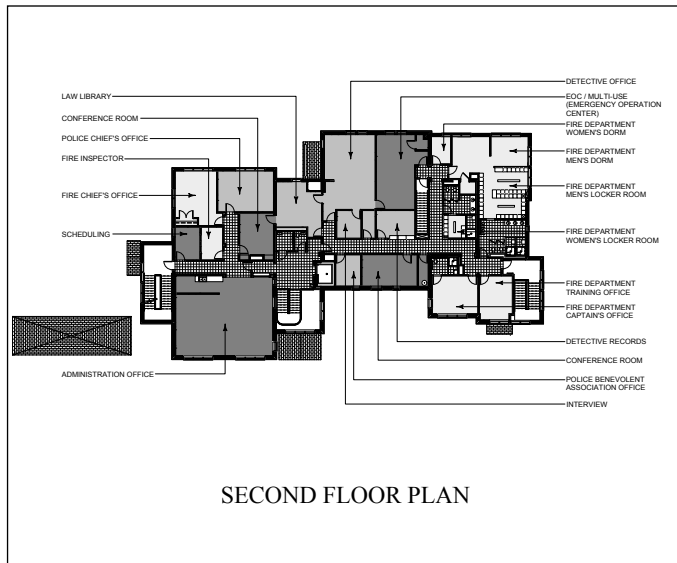
Signage: Mulberry Signs

Elevators: KONE

serve as a visual roof icon. In keeping with the character of many of the homes and buildings in the Village, the design of the exterior incorporated the use of an EIFS stucco system and half-timbering to maintain the contextual Tudor style. Interior wise, a careful organization of space was designed so that Police and Fire activities do not interfere with the public and office environment. An additional Apparatus Bay for the Fire Department was also incorporated to accommodate a future Pumper Fire Engine. Complete new telecommunications systems were installed in the New Facility using CAT 6 cabling throughout as well as Fiber Optic cabling, a UPS system and the integration of Security, Fire, 911, Intercommunications, Audio-Visual and Building Automation systems. The Facility was also equipped with a diesel powered 300 KW Emergency Generator.

Calgi Construction Management, provided the pre-construction and bidding phase services as well as the construction phase services.

This project is successful on a number of design, planning and engineering levels. It is suited to meet the immediate and future needs of the Police and Fire Departments as well as the entire civic community and will serve the residents of the Village of Scarsdale for many years to come.



Construction Manager & Cost Estimator

Calgi Construction Management
116 Radio Circle, #305, Mt. Kisco, NY 10549
www.calgiconstruction.com

Architect

Peter F. Gaito & Associates
333 Westchester Avenue, South Building, #S303,
White Plains, NY 10604
www.pfga.net

Project Team

Structural Engineer:

Hillman & Miley Consulting Engineers PLLC
222 Mamaroneck Avenue, White Plains, NY 10605

General Contractor:

Piazza Brothers, Inc.
3 West Stevens Avenue, Hawthorne, NY 10532

Mechanical & Electrical Engineer:

TSF Engineering PC
200 Park Avenue South, #1020, New York, NY 10003

Communications:

L. R. Kimball
328 Innovation Boulevard, #222, State College, PA 16803

Project General Description

Location: Scarsdale, New York

Date Bid: Dec 2008 **Construction Period:** June 2009 to Nov 2011

Total Square Feet: 26,250 **Site:** 1 acre.

Number of Buildings: One

Building Size: Ground floor, 7,600; first floor, 7,000; second floor, 7,000; attic, 4,650; total, 26,250 square feet.

Building Height: Ground floor, 8'6"; first floor, 9'; second floor, 8'6"; floor to floor, 13'9"; attic, 8'6"; total, 45'.



Underground Firing Range



Meeting Room

Basic Construction Type: Addition/Renovation

Foundation: Cast-in-place, reinforced concrete, slab-on-grade.

Exterior Walls: CMU, brick. **Roof:** Slate shingles. **Floors:** Concrete.

Interior Walls: CMU, metal stud drywall.

DIVISION	COST	% OF COST	SQ.FT. COST	SPECIFICATIONS
PROCUREMENT & CONTRACTING REQ.	545,438	5.67	20.78	Bonds & insurance, general conditions.
GENERAL REQUIREMENTS	1,330,956	13.84	0.70	Supervision, temporary facilities, surveying, closeout.
CONCRETE	365,000	3.79	13.90	Concrete breakdown: cubic yards foundation, 120; cubic yards walls, 310; cubic yards floors, 290.
MASONRY	925,000	9.62	35.24	—
METALS	435,000	4.52	16.57	Structural steel, miscellaneous.
WOOD, PLASTICS & COMPOSITES	75,000	0.78	2.86	Rough carpentry.
THERMAL & MOISTURE PROTECTION	453,000	4.71	17.26	Waterproofing, insulation, exterior stucco & EIFS, roofing, firestopping, joint sealants.
OPENINGS	455,000	4.73	17.33	Doors & frames, special doors, aluminum entrances, doors & windows.
FINISHES	711,500	7.40	27.10	Plaster & gypsum board, metal stud framing, tile, flooring, acoustical, painting.
SPECIALTIES	130,800	1.36	4.98	Interior, storage, other.
EQUIPMENT	160,450	1.67	6.11	Food service, laundry, firing range.
FURNISHINGS	94,000	0.98	3.58	Casework, mats, blinds.
SPECIAL CONSTRUCTIONS	148,675	1.54	5.66	Radio, tower.
CONVEYING SYSTEMS	95,000	0.99	3.62	Elevators (1 passenger).
PLUMBING	765,789	7.96	29.17	—
HVAC	1,039,587	10.81	39.60	—
ELECTRICAL	1,895,931	19.71	72.23	—
TOTAL BUILDING COSTS	9,626,126	100%	\$366.71	Demolition & structure moving, asbestos removal.
EXISTING CONDITIONS	259,500			—
EARTHWORK	765,312			Landscaping, irrigation, aluminum gates, chain link fence.
EXTERIOR IMPROVEMENTS	116,000			(Excluding architectural and engineering fees)
TOTAL PROJECT COST	10,766,938			

UPDATED ESTIMATE TO JUNE 2012: \$403.46 PER SQUARE FOOT

Regional Cost Trends

This project, updated to June 2012 in the selected cities of the United States.

EASTERN U.S.	Sq.Ft. Cost	Total Cost	CENTRAL U.S.	Sq.Ft. Cost	Total Cost	WESTERN U.S.	Sq.Ft. Cost	Total Cost
Atlanta GA	\$311.92	\$8,187,947	Dallas TX	\$301.75	\$7,920,949	Los Angeles CA	\$403.46	\$10,590,931
Pittsburgh PA	\$393.29	\$10,323,933	Kansas City KS	\$406.85	\$10,679,931	Las Vegas NV	\$369.56	\$9,700,937
New York NY	\$501.79	\$13,171,915	Chicago IL	\$423.81	\$11,124,928	Seattle WA	\$403.46	\$10,590,931

For more information on this project and similar projects visit www.dcdarchives.com